

Dignity Glendale Memorial Medical Pavilion

222 W Eulalia St., Glendale, CA 91204



Bryan McKenney
(888) 585 - 6880 | LIC#01505792
Bryan@MedWestRealty.com

Casey Immel
(949) 278 - 5376 | LIC#01312850
Casey@MedWestRealty.com

Stacey Hall
(949) 331 - 0845 | LIC#01924089
Stacey@MedWestRealty.com

Owned and Operated by:



Dignity Glendale Memorial Medical Pavilion

222 W Eulalia St., Glendale, CA 91204

FEATURES:

- 57,600 SF Medical Building
- 3-Story, Class A Medical Office Building
- Premier On-Campus Location Just Steps from Glendale Memorial Hospital
- Excellent Tenant Mix for Cross-Referral Opportunities
- Professionally Managed



Dignity Glendale Memorial Medical Pavilion

222 W Eulalia St., Glendale, CA 91204

AERIAL VIEW:



Bryan McKenney
(888) 585 - 6880 | LIC#01505792
Bryan@MedWestRealty.com

Casey Immel
(949) 278 - 5376 | LIC#01312850
Casey@MedWestRealty.com

Stacey Hall
(949) 331 - 0845 | LIC#01924089
Stacey@MedWestRealty.com

Owned and Operated by:



Dignity Glendale Memorial Medical Pavilion

222 W Eulalia St., Glendale, CA 91204

SITE PLAN:



Bryan McKenney
(888) 585 - 6880 | LIC#01505792
Bryan@MedWestRealty.com

Casey Immel
(949) 278 - 5376 | LIC#01312850
Casey@MedWestRealty.com

Stacey Hall
(949) 331 - 0845 | LIC#01924089
Stacey@MedWestRealty.com

Owned and Operated by:
welltower

Dignity Glendale Memorial Medical Pavilion

222 W Eulalia St., Glendale, CA 91204

FLOOR PLAN

1st Floor

AVAILABLE SUITE:

Suite 101 - 3,668 RSF

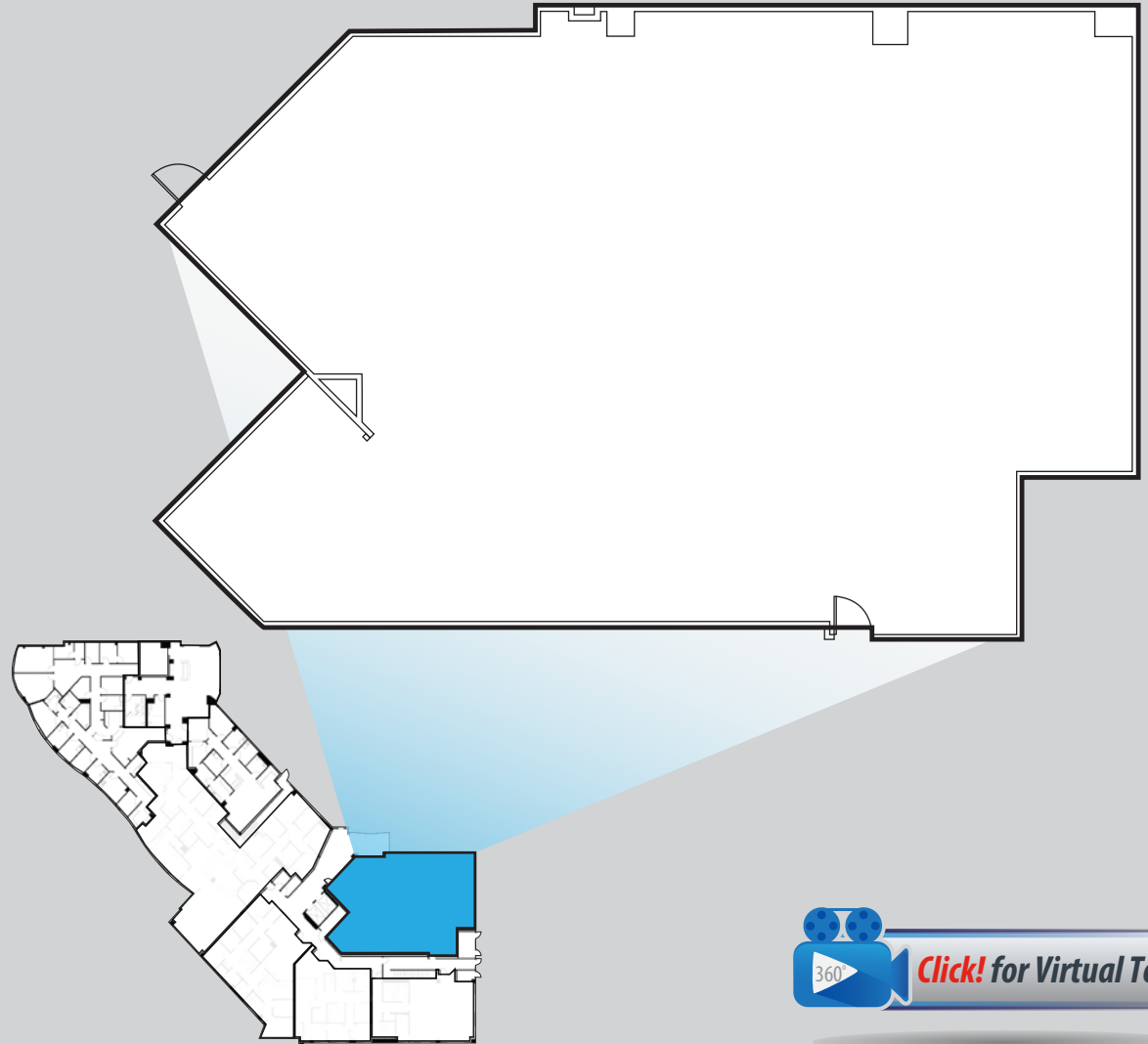
SUITE DESCRIPTION:

Shell Condition.

Ready for Tenant's Customization.

LEASE RATE:

\$3.50 MG (plus in-suite janitorial)



Dignity Glendale Memorial Medical Pavilion

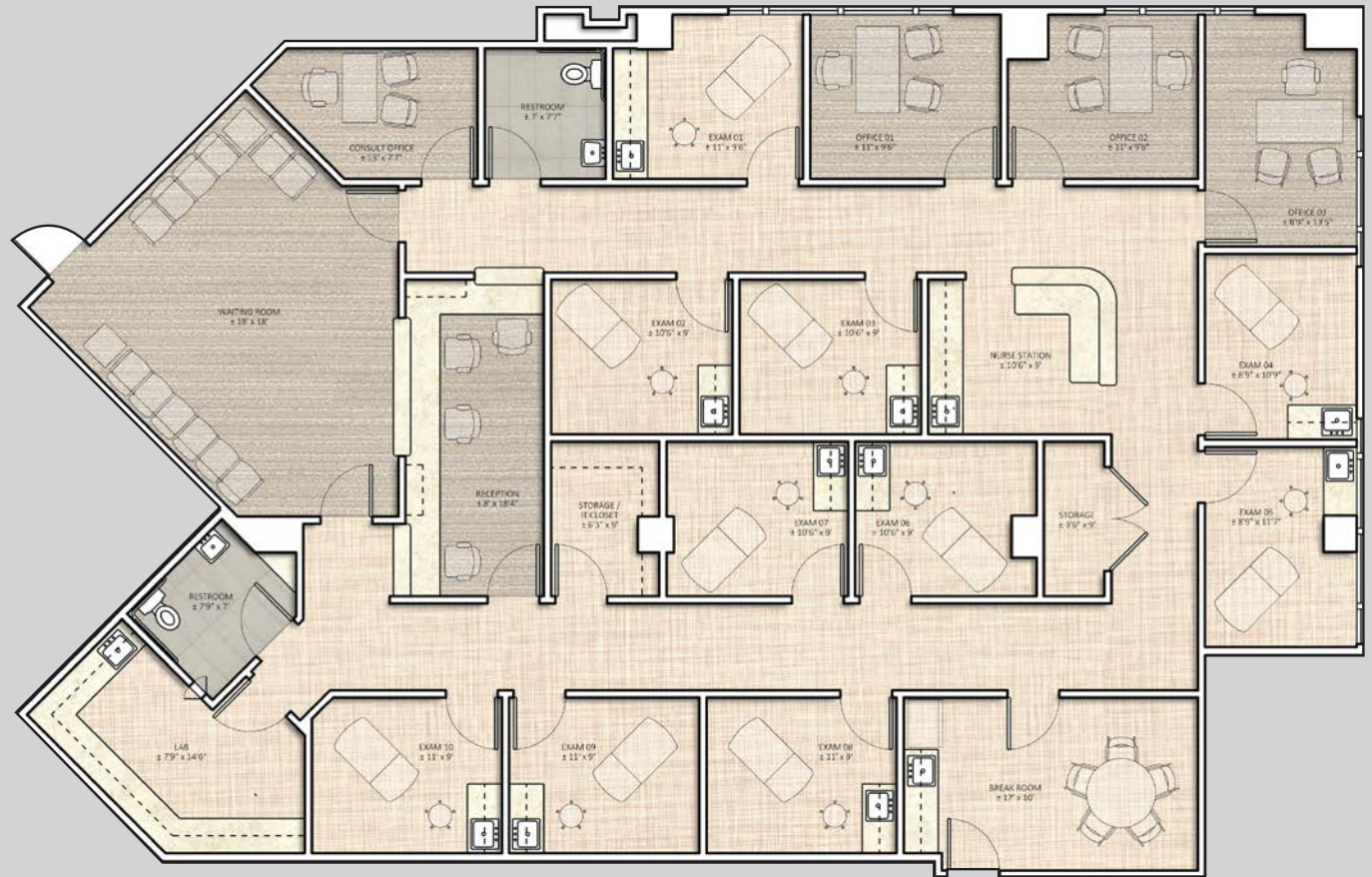
222 W Eulalia St., Glendale, CA 91204

AVAILABLE SUITE

Suite 101
3,668 RSF

SUITE DESCRIPTION:

- 10 Exam Rooms
- 3 Doctor's Offices
- Consult Office
- Laboratory
- Waiting Room
- Break room
- Nurse's Station
- Reception/Admin
- 2 In-Suite Restrooms



**Sample Demising Plan*



Dignity Glendale Memorial Medical Pavilion

222 W Eulalia St., Glendale, CA 91204

FLOOR PLAN

2nd Floor

AVAILABLE SUITE:

Suite 201 & 210 - 3,237 RSF

SUITE DESCRIPTION:

12 Exams Rooms, 2 Doctor's Offices,
Restroom, Break room, Lab Area,
Admin Area, Nurses Station,
Storage Area, Reception/Waiting Area

LEASE RATE:

\$3.50 MG (plus in-suite janitorial)



Dignity Glendale Memorial Medical Pavilion

222 W Eulalia St., Glendale, CA 91204

FLOOR PLAN

3rd Floor

AVAILABLE SUITE:

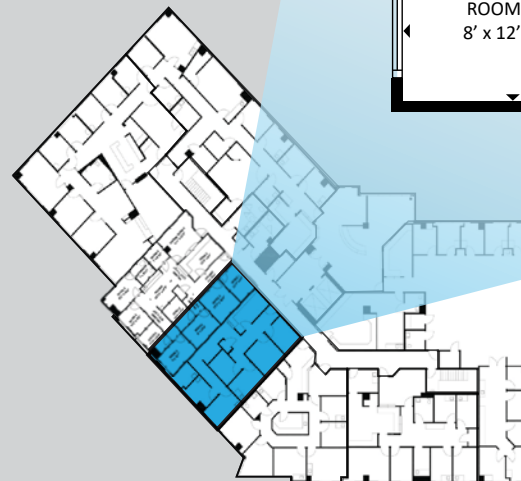
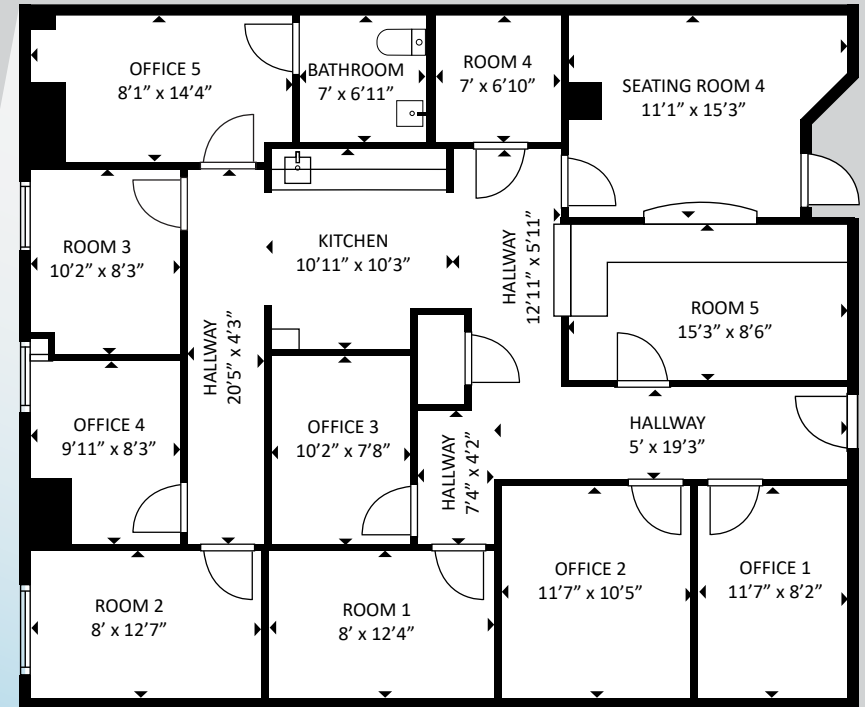
Suite 301 - 1,828 RSF

SUITE DESCRIPTION:

5 Exam Rooms, Reception/Waiting Room, Break Room, Storage, 2 Offices, and Nurses Station

LEASE RATE:

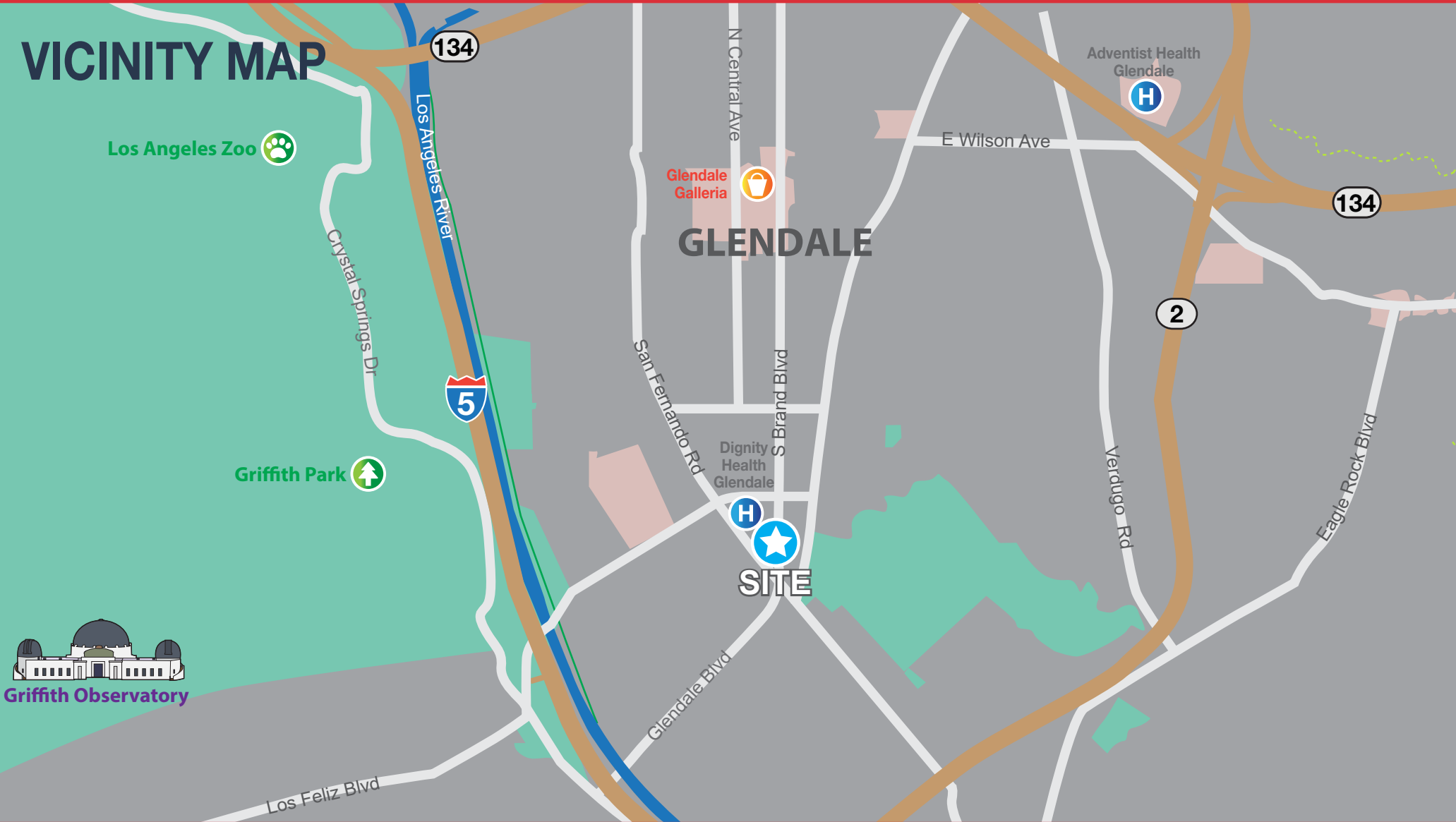
\$3.50 MG (plus in-suite janitorial)



Dignity Glendale Memorial Medical Pavilion

222 W Eulalia St., Glendale, CA 91204

VICINITY MAP



Bryan McKenney
(888) 585 - 6880 | LIC#01505792
Bryan@MedWestRealty.com

Casey Immel
(949) 278 - 5376 | LIC#01312850
Casey@MedWestRealty.com

Stacey Hall
(949) 331 - 0845 | LIC#01924089
Stacey@MedWestRealty.com

Owned and Operated by:
welltower

Dignity Glendale Memorial Medical Pavilion

222 W Eulalia St., Glendale, CA 91204



DRIVE TIME ANALYSIS

